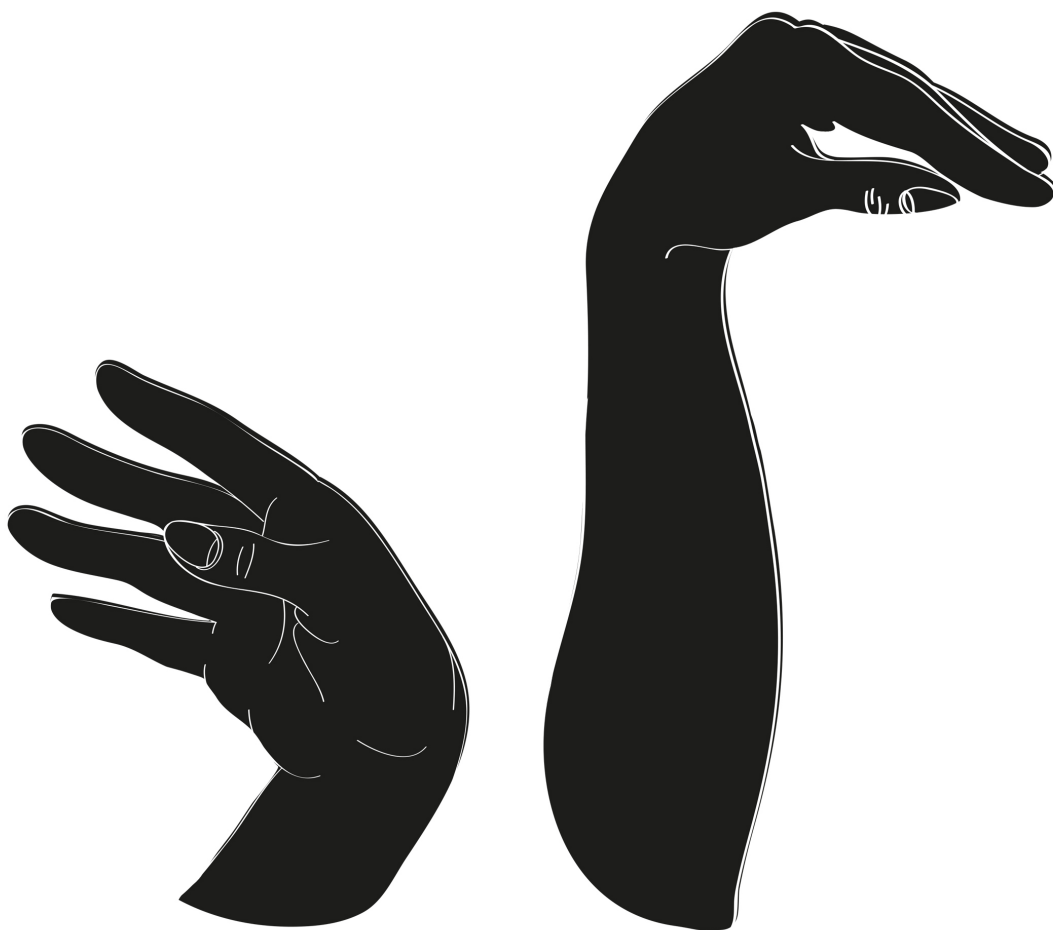


Black Swan Tour 2016-2017
Version 1.0



PILOD

Hello! Thanks for booking Pilod. See this rider as a lead. We can always talk about it.

Line up:

Frédéric Baervoets: lead vocal, guitar
Christophe Vandewoude: bass, backing vocal
Geert Luyts: drums

Sound Engineer: Steven Crabbé (0032 495 62 82 50 crabbe.steven@telenet.be)

No Monitor Mixer

No Light Engineer

Pilod requires 45 minutes to set-up and do a line- and soundcheck. It can be faster for festivals.

The PA must be up and running properly by our scheduled arrival time.

The power supply for the PA should be grounded and used only for the sound system and the bands' equipment. No lights on these power groups.

In general the PA-system should be adequate for the size of the room and of a decent quality.

The mixing desk should be placed in the middle of the room. Not under a balcony or acoustic bad place.

CHANNEL	INPUT	MIC	STAND	INSERT
1	Kick In	E 901*		
2**	Kick Out	Beta 52	Small	
3	Snare Top	BF 521*	Small	Compressor
4**	Snare Bottom	E604		
5	Hi-Hat	C451	Small	
6	Racktom	E604	Clip	Gate
7	Floortom	E604	Clip	Gate
8	Floortom	E604	Clip	Gate
9	Overhead	C214*	Large	
10	Overhead	C214*	Large	
11	Bass	PRO 48*		Compressor
12	Guitar	BF 521*	Small	Compressor
13	Lead Vocal Frédéric	SM58	Large	Compressor
14	Vocal Christophe	SM58	Large	Compressor
15	Vocal Geert	SM58	Large	Compressor
ST Return	SPX 2000			
ST Return	M2000			

* we bring these mics & DI

** these channels are optional, but we like to have them ☺

F.O.H.-desk:

- 24 ch minimum
- 4 band parametric EQ
- if monitors are send from FOH we need 3 aux pre-fader (MON) and 3 aux post-fader (FX)
- 2 stereo returns
- We don't mind a digital desk, but please contact Steven first

Inserts & FX:

We bring our own inserts and FX. Not that they are better, but we are used to them. In case of a digital desk, we use the gates and compressors of the desk. But we would like to use our own M2000 ans SPX 2000. So we need three aux post fader en 2 stereo returns

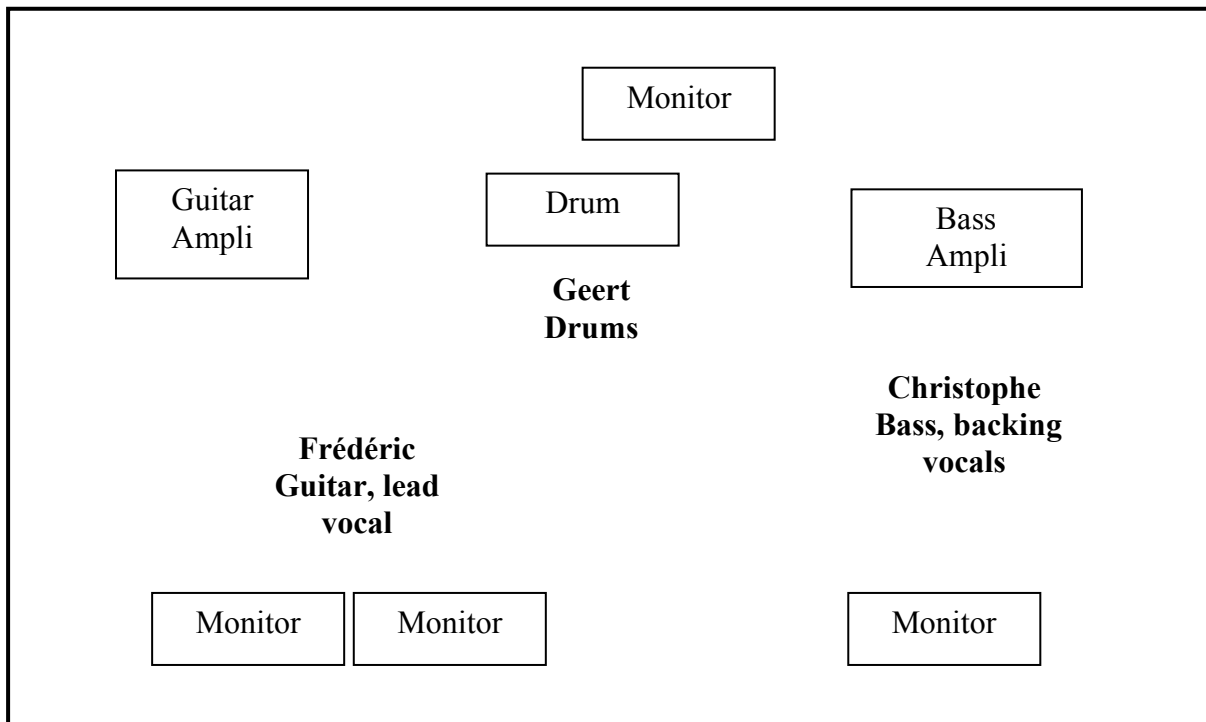
Monitors:

- 4 good quality wedges
- graphic equalizers for each wedge
- if monitors are not send by FOH, a friendly and good monitor mixer

Lights:

Please create a dark melancholic atmosphere. We really love floorlights!

Stageplan



If there is any problem with the requirements of this rider or you still have some questions, please contact crabbe.steven@telenet.be or 0032 495 62 82 50

For small venues like bars, living rooms, garden party's,... please contact Steven to find a solution to have a good sound.